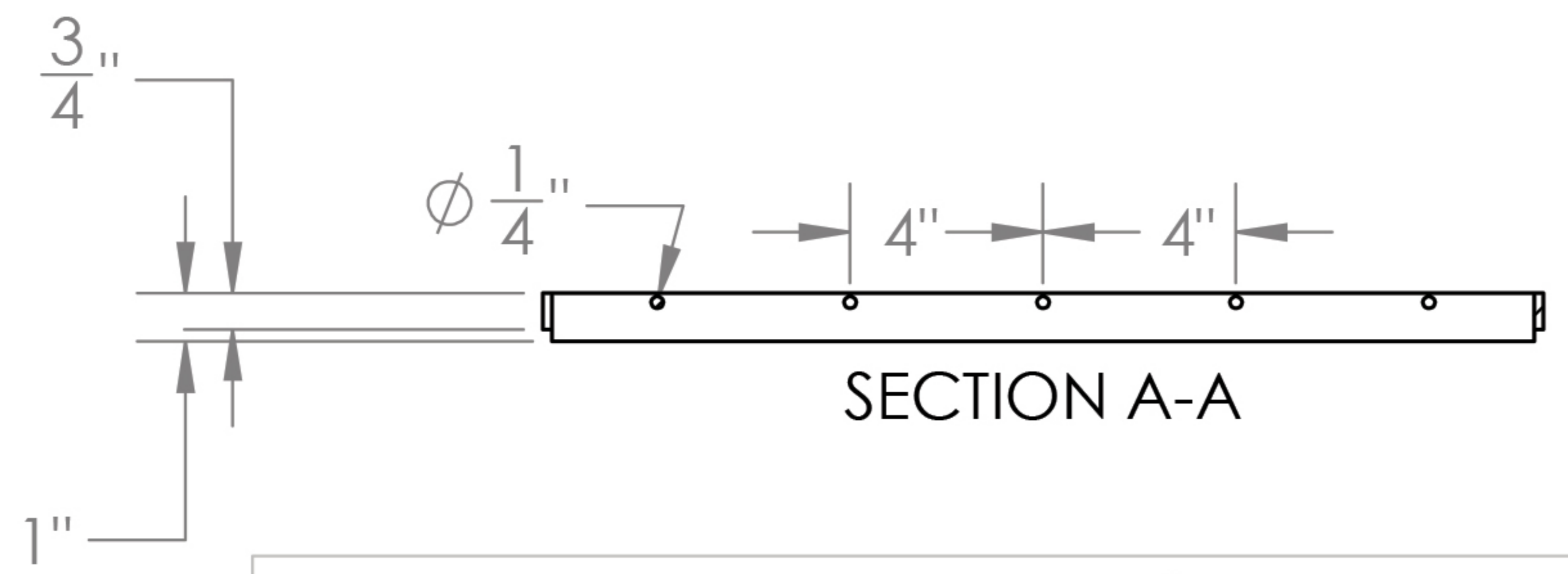


SECTION B-B



SECTION A-A

BOM		
MARK	QTY	MATERIAL
1	16	FLAT BAR: 3/16" x 1" x 20 3/8"
2	2	FLAT BAR: 3/16" x 3/4" x 18"
3	5	CROSS BAR: 1/4" ϕ x 18"
MATERIALS: STEEL: ASTM A-36, Hot Dip galvanized after fabrication. Overall Frame dimension tolerance -0"/ +1/16" GALVANIZING: ASTM A-123		GENERAL NOTES: GRATE MUST BE SQUARE AND FLAT AFTER GALVANIZING

**TRI-STATE
STEEL INC.**

SIZE	DWG. NO.	REV.
	18x18 PED G	
SCALE: 1:8	WEIGHT: \pm 19.8 LBS	SHEET 1 OF 1